

# Improving How We Learn: Education Committee Update

By Raheem B. Kherani, BSc (Pharm), MD, FRCPC, MHPE

The newly restructured CRA Education Committee (Figure 1) has been actively engaging within one of the CRA's key pillars – education (with care and research). Thank you to all the subcommittee co-chairs, all 29 committee members, CRA board and CRA staff for making the transitions happen effectively. The meetings have attempted to be succinct, productive and utilize the variety of electronic tools available through the CRA.

### Continuing Professional Development (CPD) Subcommittee – Accreditation Renewal

The CRA has recently been informed of Royal College Continuing Professional Development (CPD) accreditation renewal, valid until 2027, which will enable the CRA to continue to assist with delivery of high-caliber education. This process has enabled a review of all our procedures related to accreditation of CRA-delivered education to maximize opportunities for CRA member education. At the recent 11th National Accreditation Conference, the CRA collaborated with the Royal College in the delivery of a CPD accreditation workshop to participants from national specialist society-based and university-based CPD accreditors, on

incorporation of CPD innovation into CPD programming. The CRA Indigenous Health Initiative (in collaboration with the CRA Quality Care and Annual Scientific Meeting [ASM] Program Committees) was highly praised during the presentation of this work at the same conference.

### Postgraduate Subcommittee – CBD Transition, NRRW, and NWRITE

The pediatric and adult rheumatology programs are actively transitioning to the competence by design (CBD) format of competency-based medical education through the Royal College programs. The postgraduate subcommittee continues to explore strategies and to assist programs with support and collaboration. The National Rheumatology Residents' Weekend (NRRW) will be taking place January 10-12, 2020, in Toronto for all rheumatology residents. During this meeting, the National Written Rheumatology In-Training Examination (NWRITE) will be given to all adult rheumatology trainees.

### Undergraduate Subcommittee – NURC

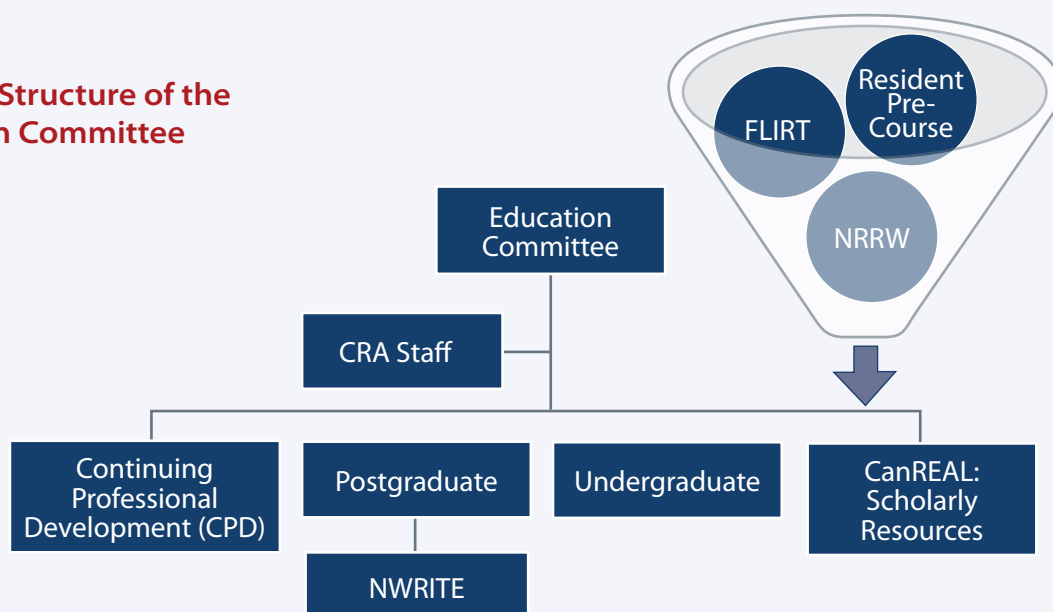
The development of the National Undergraduate Rheuma-



Some of the members of the Education Committee at the 2019 CRA ASM. Pictured from left to right: Drs. Nicole Johnson, Shirley Tse, Mary Bell, Stephanie Yang, Janet Pope, Susan Humphrey-Murto, Marie Clements-Baker, Raheem Kherani, Gregory Choy, Elana Murphy, Mercedes Chan, Jennifer Lee, Marie-Paule Morin, Anna Oswald, Lori Albert, and Elishka Pek.

Figure 1.

## The New Structure of the Education Committee



FLIRT: Future Leaders in Rheumatology Training; CanREAL: Canadian Rheumatology Education and Learning; NRRW: National Rheumatology Residents' Weekend; NWRITE: National Written Rheumatology In-Training Examination


tology Curriculum (NURC) is underway through the leadership of this committee. There will be input gathered from across the country with consultation, deliberations and recommendations that hope to positively impact delivery of Canadian musculoskeletal education.

### CanREAL Subcommittee – Scholarly Input

Our experts in rheumatology medical education scholar-

ship continue to provide input in a variety of projects. This resource is one for CRA staff, committees and members for the development of rheumatology-related medical education initiatives. The group is currently coordinating the Practice Reflection Award in addition to providing input in CBD, ASM, and Abstract Review Committee discussions.



With a looming deadline of January 31st, 2020, for Royal College Maintenance of Certification, I encourage members to revisit the series “CPD for the Busy Rheumatologist” previously published in the CRAJ, (in the summer 2017, fall 2017 and spring 2018 issues [available at [craj.ca](http://craj.ca)]), for tips on how to complete the requirements for your certification cycle. You can also enhance and extend your learning by engaging with the MAINPORT app.



**Engage with your MAINPORT App!**

**Enhance your meeting learning with Section 2 activities**

- **Review** answers to audience response questions during Keynotes.
- **Record** your understanding and plans as a Personal Learning Project (Section 2) in your MAINPORT App.



**Engage with your MAINPORT App!**

**Extend your meeting learning with Section 3 activities**

- **Discuss** challenging related cases with your colleagues.
- **Explore** how the feedback will change your practice as a Practice Assessment (Section 3) in your MAINPORT App.




*Raheem B. Kherani, BSc (Pharm), MD, FRCPC, MHPE  
CRA Education Committee Chair,  
Clinical Associate Professor,  
University of British Columbia  
Medical Lead,  
Interdisciplinary Collaborative Arthritis Program,  
Mary Pack Arthritis Program  
Vancouver, British Columbia  
Rheumatology Lead, GF Strong Rehabilitation Centre  
Vancouver, British Columbia  
Rheumatologist,  
West Coast Rheumatology Associates  
Richmond, British Columbia*